



Maria Norte Property
Ag-Au-Pb-Zn

Disclaimer

Certain information presented, including discussions of future and operations, contains forward-looking statements involving substantial known and unknown risks and uncertainties.

These forward-looking statements are subject to risk and uncertainty, many of which are beyond control of company management.

These may include, but are not limited to the influence of general economic conditions, industry conditions, fluctuations of commodity prices and foreign exchange rate conditions, prices, rates, environmental risk, industry competition, availability of qualified staff and management, stock market volatility, timely and cost effective access to sufficient working capital or financing from internal and external sources. Actual results, performance, or achievements may differ materially from those expressed or implied by these forward looking statements.

Information in this presentation regarding the Company's mineral properties was prepared and reviewed by Jeffrey Reeder, P.Geo, a non-independent Qualified person for the purpose of National Instrument 43-101, Standards of Disclosure for Mineral Projects.

Mineralization present in proximal properties is not necessarily indicative of mineralization on the Company's properties.



Huachocolpa Polymetallic District

Huachocolpa Pb-Zn-Ag-Cu and Au District is located 260 km's southeast of Lima. The district hosts several producing and past-producing polymetallic vein hosted orebodies and hosts two large operating flotation plants located within 10 km's from Rio Silver 100% owned properties.

- **Minas Maria Norte Au-Ag Property** (~ 390 hectares)
- Au rich polymetallic veins – Castor Veins 0.42 m of 16.5 g/t Au. 1128 g/t Ag 3.85% Pb – Pamela Veins Ag-Pb with 495 to 560 g/t Ag and +10% Pb.
- Samples up to 40.3 g/t Au and 1848 g/t Ag – 50% of the samples taken returned 5.33 g/t Au, 459 g/t Ag, 5.4% Pb and 1.99% Zn. Gross Metal Value - \$838 per tonne (2020)
- 4.8 million tonne Tangana Pb-Zn-Ag resource with a recent Preliminary Economic Analysis supporting a 2500 tonne / day processing facility planned for future construction 2.5 km's SE of Maria Norte
- Endeavor Silver, a \$1.6 billion Vancouver based company recently purchased Minera Kolpa with its 1440 tpd plant located 8km's from Maria Norte's

Source:
https://latitudebasemetals.com/_resources/presentations/corporate-presentation.pdf



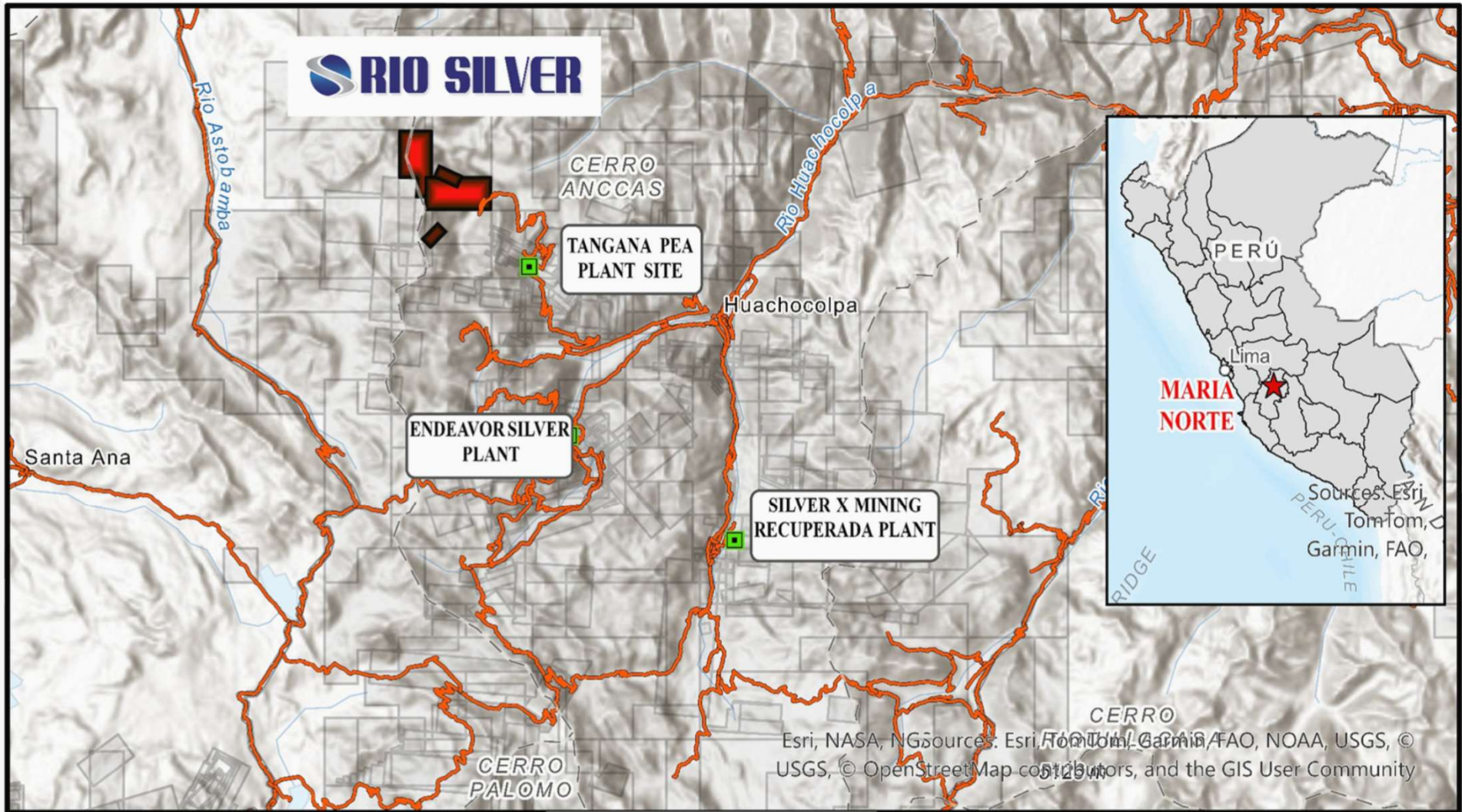
Au g/t	Ag g/t	Cu%	Pb%	Zn%
0.19	543.50	0.65	12.02	0.22

Pamela Vein – 1 to 4 meters wide Mina Maria Norte Property

MARIA NORTE PROPERTY



Au g/t	Ag g/t	Cu%	Pb%	Zn%
0.96	509.85	0.19	6.75	0.12



RIO SILVER

CERRO ANCCAS

TANGANA PEA PLANT SITE

Huachocolpa

ENDEAVOR SILVER PLANT

SILVER X MINING RECUPERADA PLANT

CERRO PALOMO



Esri, NASA, NGsources: Esri, TomTom, Garmin, FAO, NOAA, USGS, © USGS, © OpenStreetMap contributors, and the GIS User Community



RIO SILVER

**MARIA NORTE PROJECT
PROPERTY ACCESS MAP**

Coordinate System: WGS 1984 UTM Z18S

 Maria Norte Project Claims

 Road



Mapping and sampling identified several vein sets.
43 samples from the area 5.33 g/t Au, 450g/t Ag,
5.4% Pb and 1.99% Zn

Maria Norte

Minera Barrick Peru

Silver X

Cauca Vein
1.0m 307g/t AgEq*

Tangana Vein System
4.8MT 256g/t AgEq*
39.8M oz AgEq*

Drilling result from Tangana include:
1.38m of 928 Ag eq
0.92 m of 631 Ag eq
Source Silver X Mining released 23rd, 2021

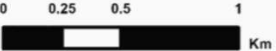
Source: Silver X News Released and Website
www.silverxmining.com



MARIA NORTE
Mapping and Sampling Vein Sets

Coordinate System: WGS 1984 UTM Z18S

RIO SILVER Maria Norte Project
Location of Mineralized Structures
in the NW Part of the Huachocolpa
Mining District South - Central Peru



LOOKING EAST - MINAS MARIA NORTE



100m

Silver X's West Tangana Extension

Veins system previously sampled

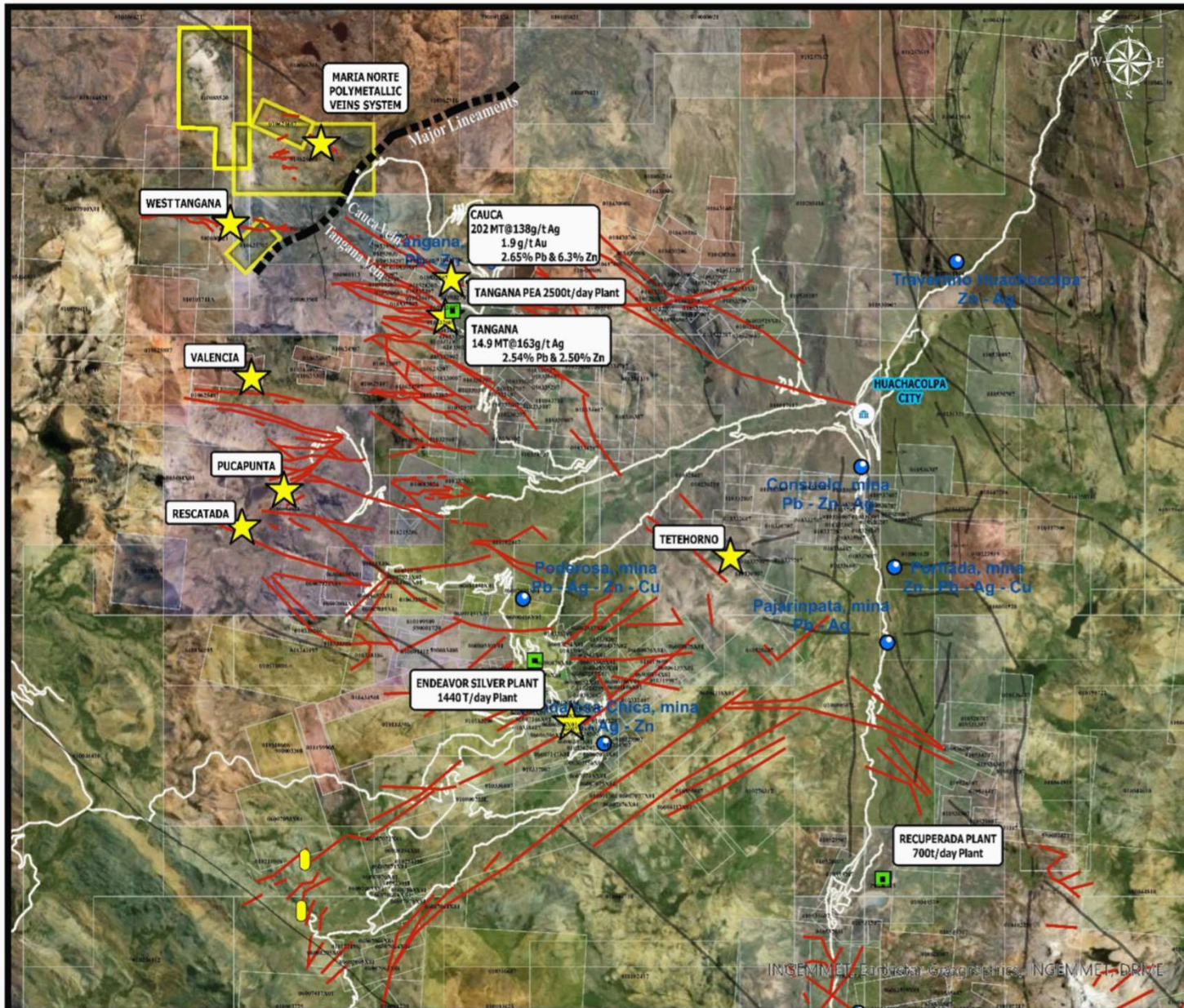
Rio Silver Property Boundary

- Maria Norte RIO SILVER
- Veins System
- Sample 2018
- Previous Sample

INGEMMET, Source: Airbus,USGS,NGA,NASA,CGIAR,NLS,OS,NMA,Geodatastyrelsen,GSA,GSI and the GIS User Community, INGENMET, DRIME, Maxar

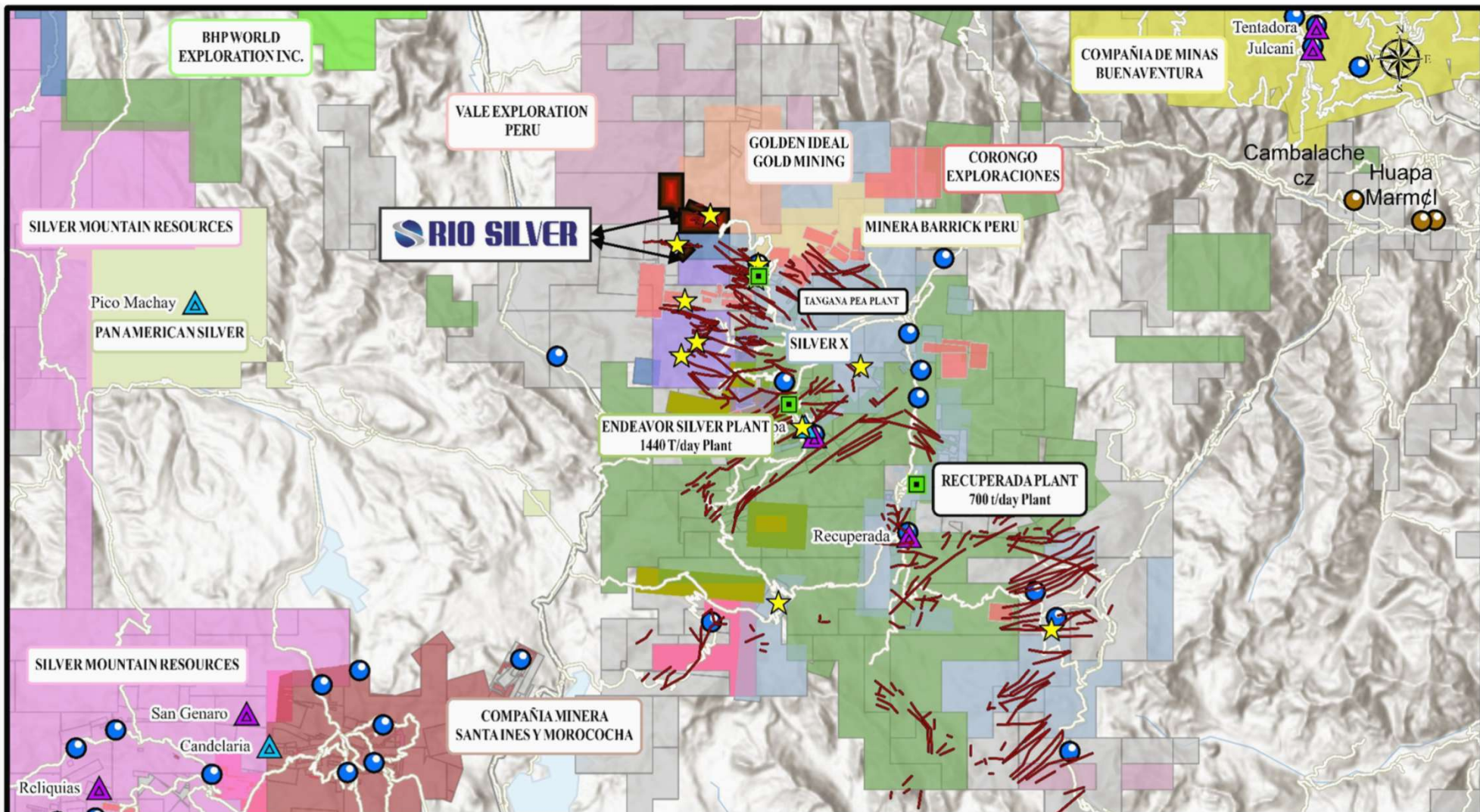


MARIA NORTE VEINS SYSTEM



- Maria Norte Claims
- Others Claims
- Veins
- Metallic Deposit
- Project
- Mine
- Mines Mapped from Buenaventura
- Au Small Mine
- Mineral Processing Plant

0 0.5 1 2 3 4 km
 Coordinate System: WGS 1984 UTM Z18S



RIO SILVER

**MARIA NORTE
LOCATION MAP**

Coordinate System: WGS 1984 UTM Z18S

- Maria Norte Claims
- Veins
- Metallic Deposit
- No Metallic Deposit
- Project
- Mine
- Mines Mapped from Buenaventura and Pan American Silver Projects

0 1 2 4 6 8
Km

Maria Norte Project

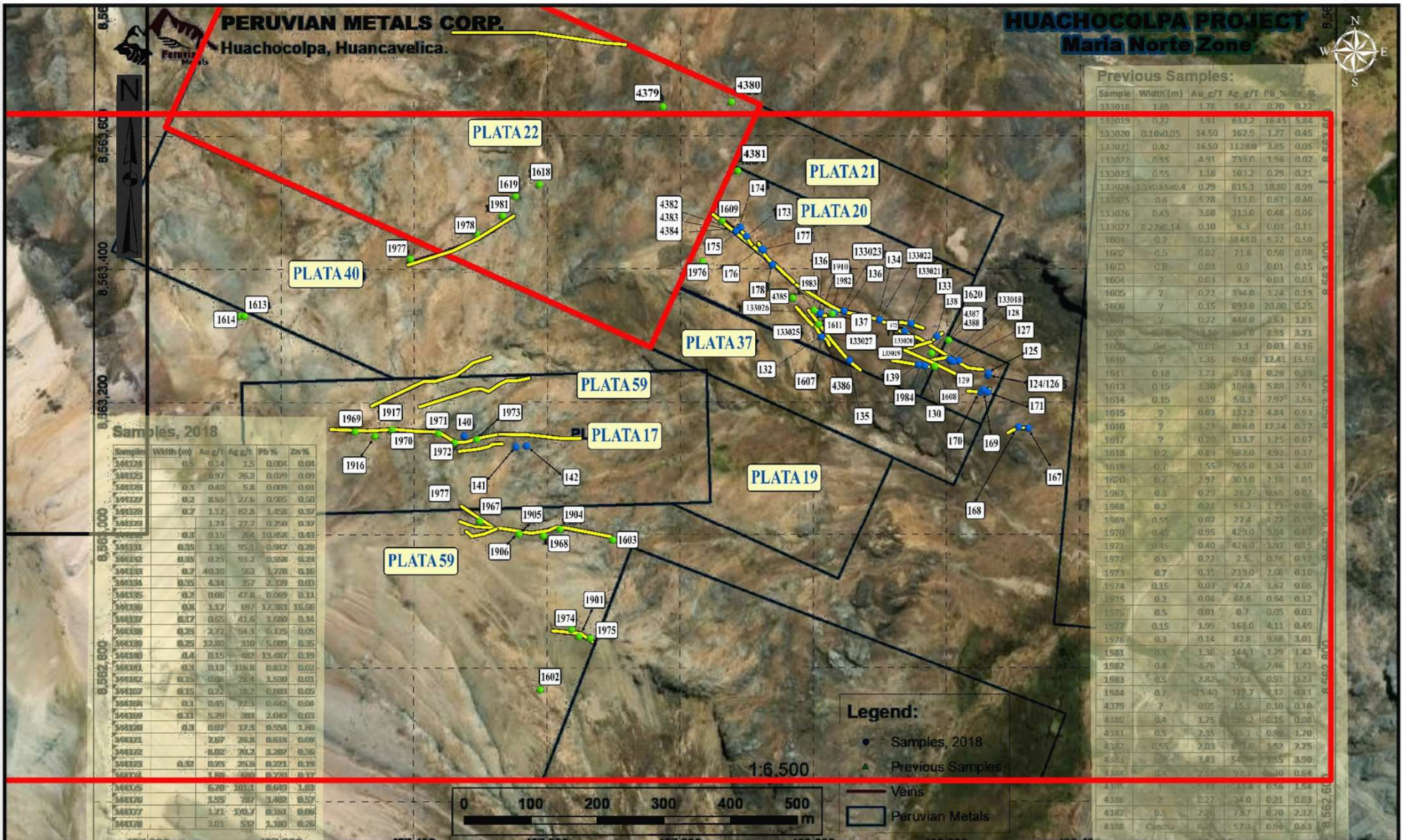
PAMELA I VEIN: Up to 4 meters in width



CASTOR VEINS:
 Au rich sample #133021 – 16.5 g/t
 Au, 1128 g/t Ag, 3.85% Pb



Au g/t	Ag g/t	Cu%	Pb%	Zn%
0.19	543.50	0.65	12.02	0.22



HUACHOCOLPA PROJECT
MARIA NORTE - SAMPLE LOCATION

Coordinate System: WGS 1984 UTM Z18S

Rio Silver Maria Norte Claims
 Peruvian Metals
 Veins
 2018 Sample
 Previous Sample

0 0.05 0.1 0.2 0.3 0.4
 Km



Contact Information

Christopher Verrico CEO

chris.verrico@riosilverinc.com

Tel: +1 (604) 762-4448