



**RIO SILVER**

**Maria Norte Property**  
**Ag-Au-Pb-Zn**

APRIL 2025

***An Advanced Stage  
Discovery in Peru***



TSX.V : RYO  
OTC: RYOOF  
[www.riosilverinc.com](http://www.riosilverinc.com)

# Forward Looking Statements

Certain information presented, including discussions of future and operations, contains forward-looking statements involving substantial known and unknown risks and uncertainties.

These forward-looking statements are subject to risk and uncertainty, many of which are beyond control of company management.

These may include, but are not limited to the influence of general economic conditions, industry conditions, fluctuations of commodity prices and foreign exchange rate conditions, prices, rates, environmental risk, industry competition, availability of qualified staff and management, stock market volatility, timely and cost effective access to sufficient working capital or financing from internal and external sources. Actual results, performance, or achievements may differ materially from those expressed or implied by these forward looking statements.

Information in this presentation regarding the Company's mineral properties was prepared and reviewed by Jeffrey Reeder, P.Geo, a non-independent Qualified person for the purpose of National Instrument 43-101, Standards of Disclosure for Mineral Projects.

Mineralization present in proximal properties is not necessarily indicative of mineralization on the Company's properties.

# Summary

## Rio Silver

- Canadian microcap mining company focused on advanced stage Silver/Gold projects in Peru
- Management collectively with 150 years of discovery, mine development & operations history
- 100% interest at Maria Norte high grade silver dominant polymetallic deposit c/w significant gold credits
- 100% interest in a world class VMS critical metals target in the prolific “Ring of Fire” Northern Ontario

## Maria Norte

- Adjacent & on strike with operating mines with 2 large Canadian owned processing plants within 11 km’s
- local metallurgy is well understood
- 2.5 km’s from a current “PEA” Preliminary Economic Assessment which supports the construction of a new 2500 tonne/day plant encompassing the continuation of the same supporting, silver dominant, mineralized structures

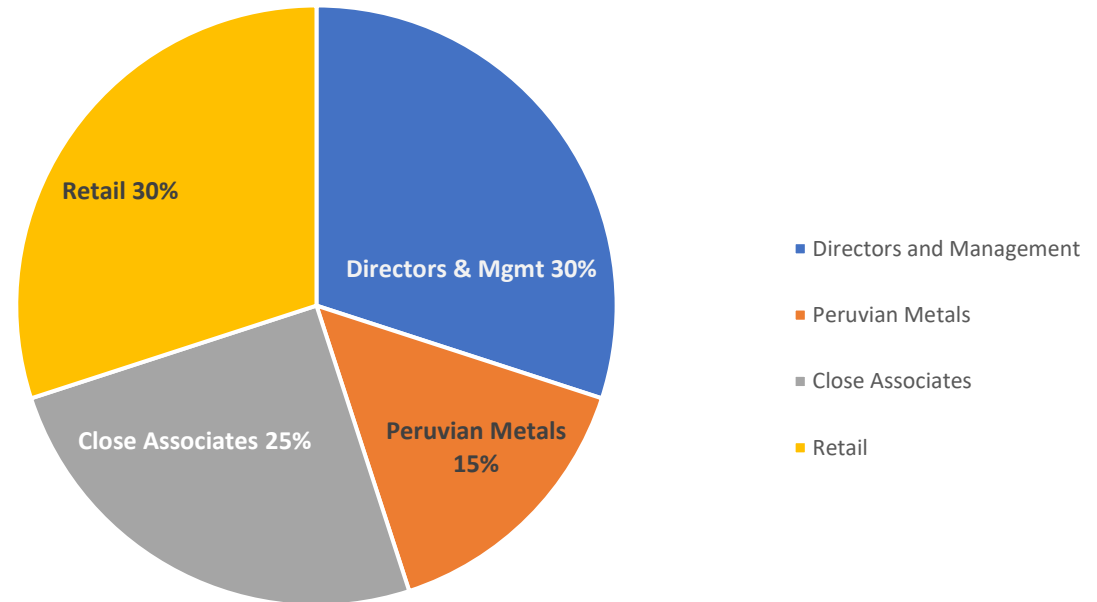
## Strategy

- Resource delineation at Maria Norte by tunneling / mining along the identified vein structures liberating the high grade subvertical mineralization directly above and below while creating underground drilling stations supporting economic underground diamond drill resource expansion
- 2x valuable royalty income streams, both with advanced royalty payment components to immediately augment development costs at Maria Norte

# Rio Silver Inc. Share Structure

Capitalization	
Symbols	TSX.V - RYO OTC - RYOOF
Shares Outstanding	99,832,844
Stock Options	4,221,500
Warrants	5,000,000
Fully Diluted	108,054,344

Estimated Share Ownership



**Largest shareholders - Directors / Management**

# Management and Board

**President, CEO and Director - Chris Verrico** – Chris has over 25 years of experience in all aspects of managing publicly traded junior mineral exploration and development companies. The 20 years prior to this included extensive experience in contract mining, rural remote industrial work, and highway construction management. He was previously the CEO of Aguila American Gold Ltd, the CEO of Lateegra Gold Corp. prior to its sale to Excellon Resources Inc., and the CEO and later Co-Chairman of West Hawk Development Corp. He served as a Director for Raytec Development Corp. until mid-2009, when it eventually became Africa Oil Corp. Between 2000 and 2002, Chris performed IR duties for Candente Resource Corp., operating in Peru, and forged several strategic relationships within the industry there.

**Chief Financial Officer and Director – Christopher Hopton** – Christopher holds a Bachelor of Business Administration from Simon Fraser University, British Columbia, and is a Certified Professional Accountant. He has over 23 years of expertise in financial management and operations, with experience in financial planning, accounting policy, and business process improvement. He has worked as a business investment and finance consultant and served as the CFO of Central Resources Corp. He was also the Controller at Canadian Airlines, where he was responsible for an annual operating budget of \$200 million. Chris was involved in the restructuring of 360 Networks, which led to a buyout by Bell Canada.

**Executive Chairman, Director – Steve Brunelle** – Steve is a graduate geologist of Queen's University with over 30 years of experience in exploration and management of both Canadian and international exploration projects. He was an officer and director of Corner Bay Silver Inc. and played an integral role in the discovery and assessment of the Alamo Dorado silver-gold project in Sonora, Mexico. Corner Bay Silver (TSX) merged with Pan American Silver Corp. in 2003. Steve was also a founder, officer, and director of Stingray Copper Inc., which was acquired by Mercator Minerals Ltd. in a plan of arrangement in December 2009. He is currently a director of several TSXV-listed resource companies.

**Director – Richard Mazur** – Richard holds an MBA from the Richard Ivey School of Business. He is the co-founder and past Managing Director of RLG International Inc., a performance improvement consulting firm with a presence in over 30 countries. Since 1984, Mr. Mazur has built the company to over 300 employees and \$100 million in revenue.

# Technical Team - Consultants

## Consulting Geologist, Jeff Reeder

Jeff Reeder holds a B.Sc. (Hon.) in Geology from the University of Alberta, 1988, and is a Professional Geologist. He has over 30 years of experience in conducting exploration for precious and base metals throughout the Americas, with a strong track record of discovery. He was responsible for the identification and sale of the Aguila Cu-Mo and Pinaya Cu-Au projects in Peru.

## Consulting Engineer, Eric H. Hinton

Eric H. Hinton, P.Eng., FCIM, holds degrees from Haileybury School of Mines, Queen's University, and Laurentian University. He is a registered professional engineer in Ontario and Manitoba, a Fellow of the Canadian Institute of Mining, Metallurgy and Petroleum, and a Qualified Person in underground mining from the Mining and Metallurgical Society of America. His expertise focuses on operations ranging from 50 to 500 tonnes per day, among other areas.

## Consulting Geologist, Jim McCrea

Jim McCrea holds a B.Sc. (Hon.) in Geology from the University of Alberta, 1988. He is a specialist in geologic modeling and resource estimation. His work has underpinned many major transactions, including those for Agnico-Eagle Mines, Peñoles, Sumitomo, and numerous others.

## Consulting Geologist, Ryan Grywul, P.Geo.

Ryan Grywul, P.Geo., is a professional geologist with over 25 years of experience as Exploration Manager and VP of Exploration, specializing in project generation, mine exploration, and advanced and detailed drill programs. He has experience in the Canadian Arctic, the Cordillera, and throughout the Americas.



# Huachocolpa Polymetallic District

Huachocolpa Pb-Zn-Ag-Cu and Au District is located 260 km's southeast of Lima. The district hosts several producing and past-producing polymetallic vein hosted orebodies and hosts two large operating flotation plants located within 10 km's from Rio Silver 100% owned properties.

- **Minas Maria Norte Au-Ag Property** (~ 390 hectares)
- Au rich polymetallic veins – Castor Veins 0.42 m of 16.5 g/t Au, 1128 g/t Ag 3.85% Pb – Pamela Veins Ag-Pb with 495 to 560 g/t Ag and +10% Pb.
- Samples up to 40.3 g/t Au and 1848 g/t Ag – 50% of the samples taken returned 5.33 g/t Au, 459 g/t Ag, 5.4% Pb and 1.99% Zn. Gross Metal Value - \$838 per tonne (2020)
- 4.8 million tonne Tangana Pb-Zn-Ag resource with a recent Preliminary Economic Analysis supporting a 2500 tonne / day processing facility planned for future construction 2.5 km's SE of Maria Norte
- Endeavor Silver, a \$1.6 billion Vancouver based company recently purchased Minera Kolpa with its 1440 tpd plant located 8km's from Maria Norte's



Au g/t	Ag g/t	Cu%	Pb%	Zn%
0.19	543.50	0.65	12.02	0.22

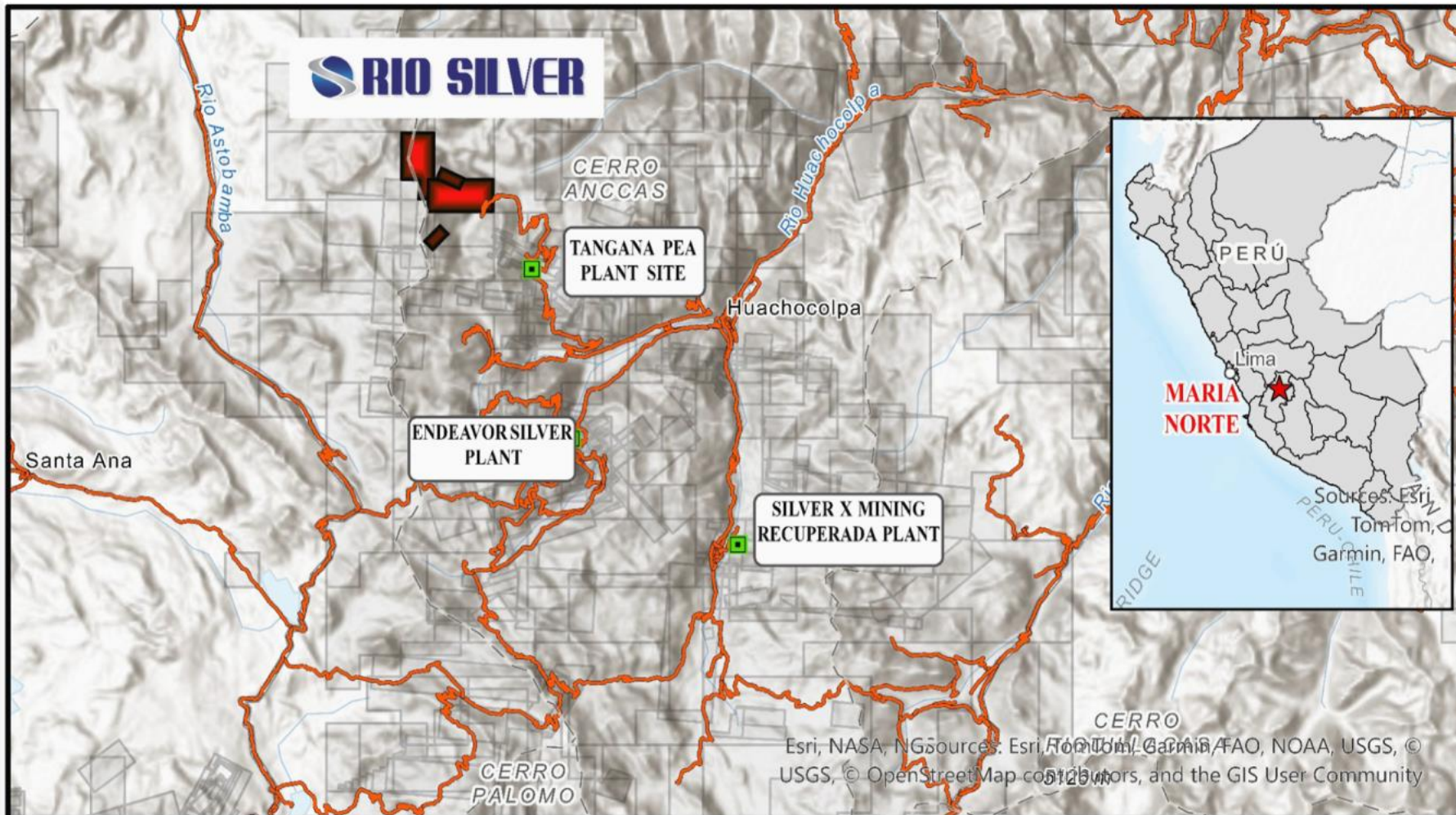
Pamela Vein – 1 to 4 meters wide Mina Maria Norte Property



# MARIA NORTE PROPERTY



Au g/t	Ag g/t	Cu%	Pb%	Zn%
0.96	<b>509.85</b>	0.19	<b>6.75</b>	0.12

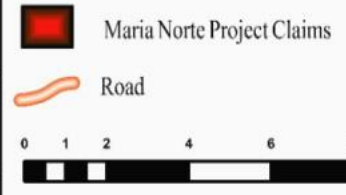


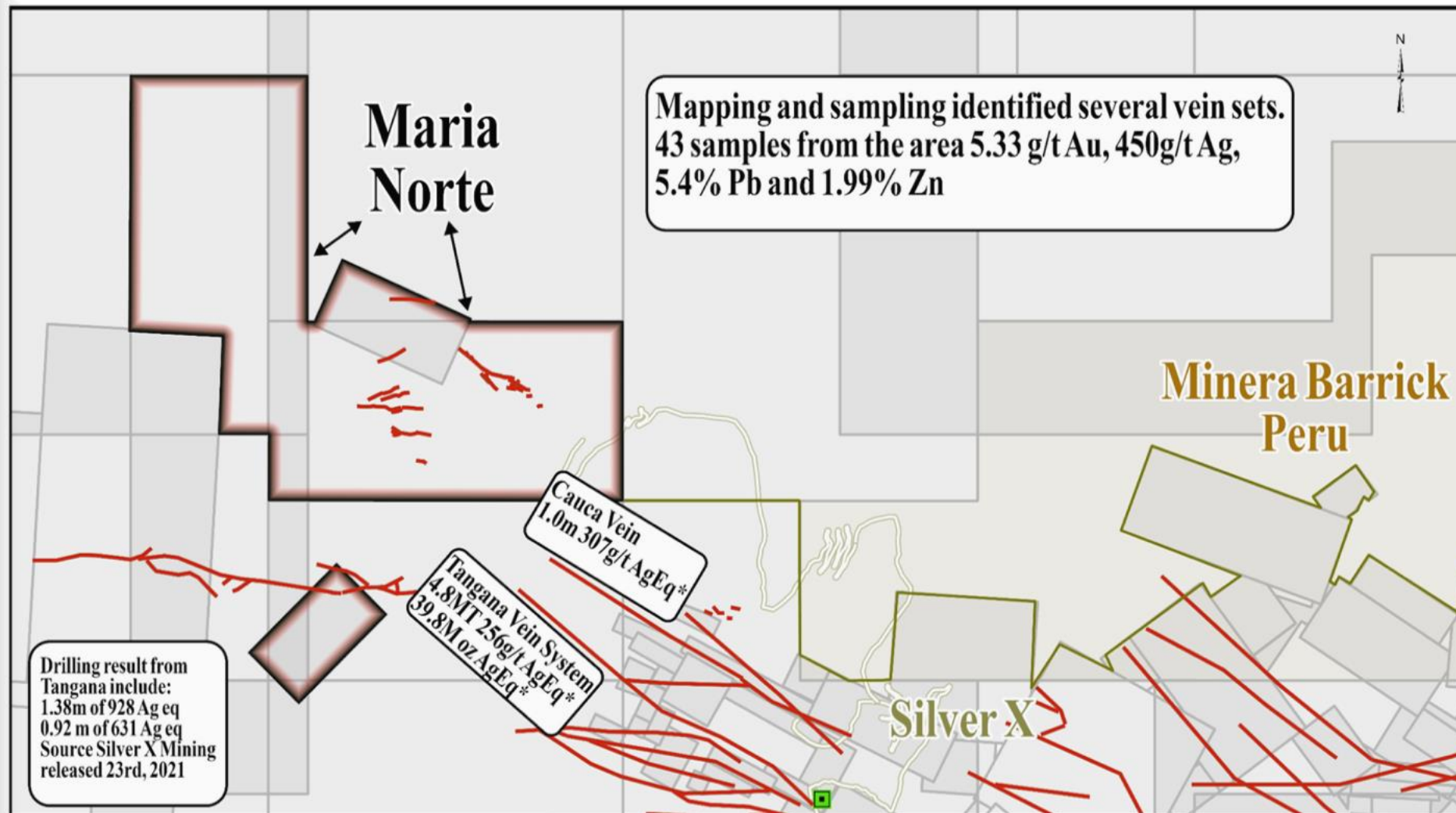
Esri, NASA, NGsources: Esri, TomTom, Garmin, FAO, NOAA, USGS, © USGS, © OpenStreetMap contributors, and the GIS User Community



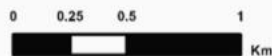
### MARIA NORTE PROJECT PROPERTY ACCESS MAP

Coordinate System: WGS 1984 UTM Z18S





Source: Silver X News  
Released and Website  
[www.silverxmining.com](http://www.silverxmining.com)

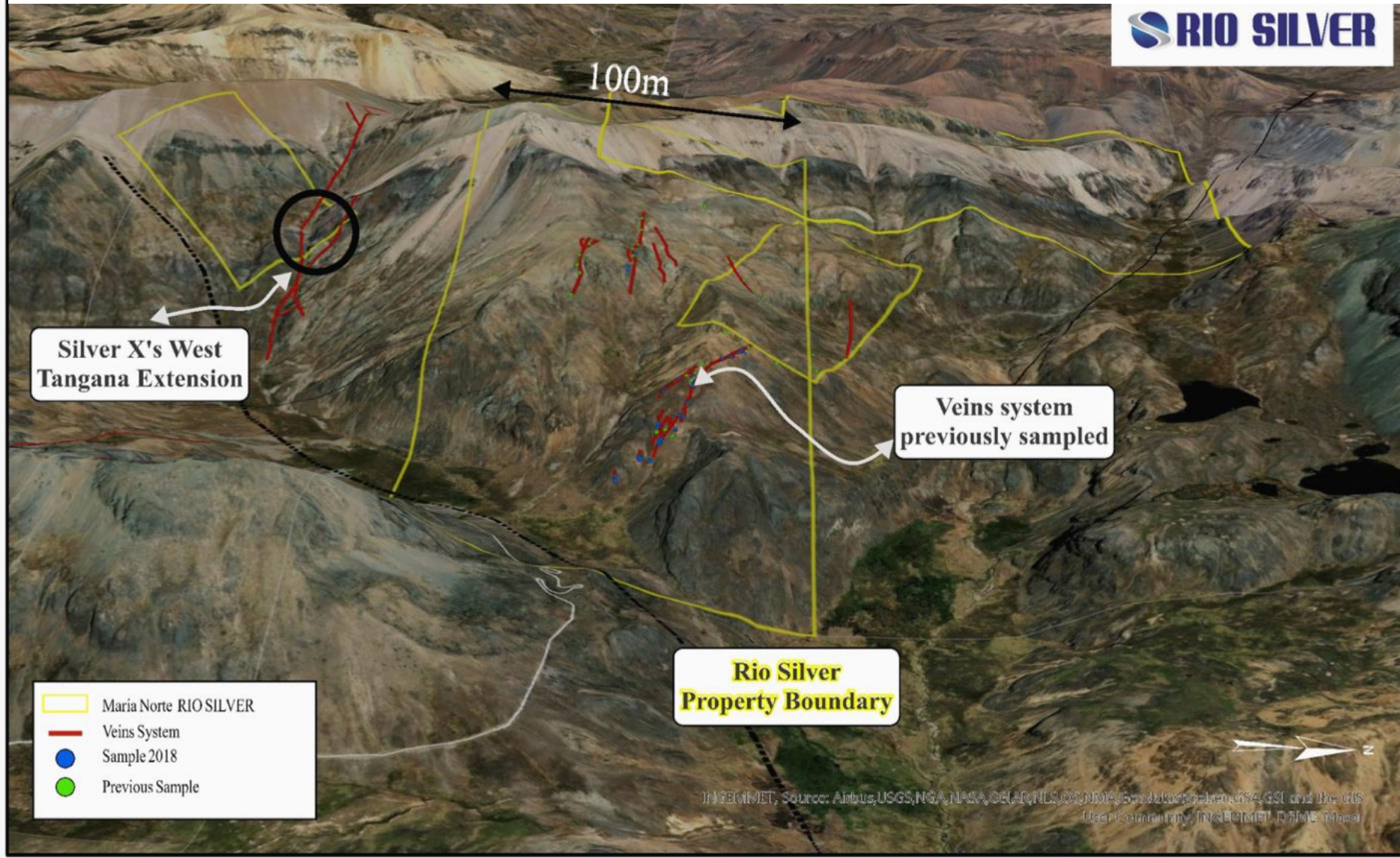


**MARIA NORTE**  
**Mapping and Sampling Vein Sets**

Coordinate System: WGS 1984 UTM Z18S

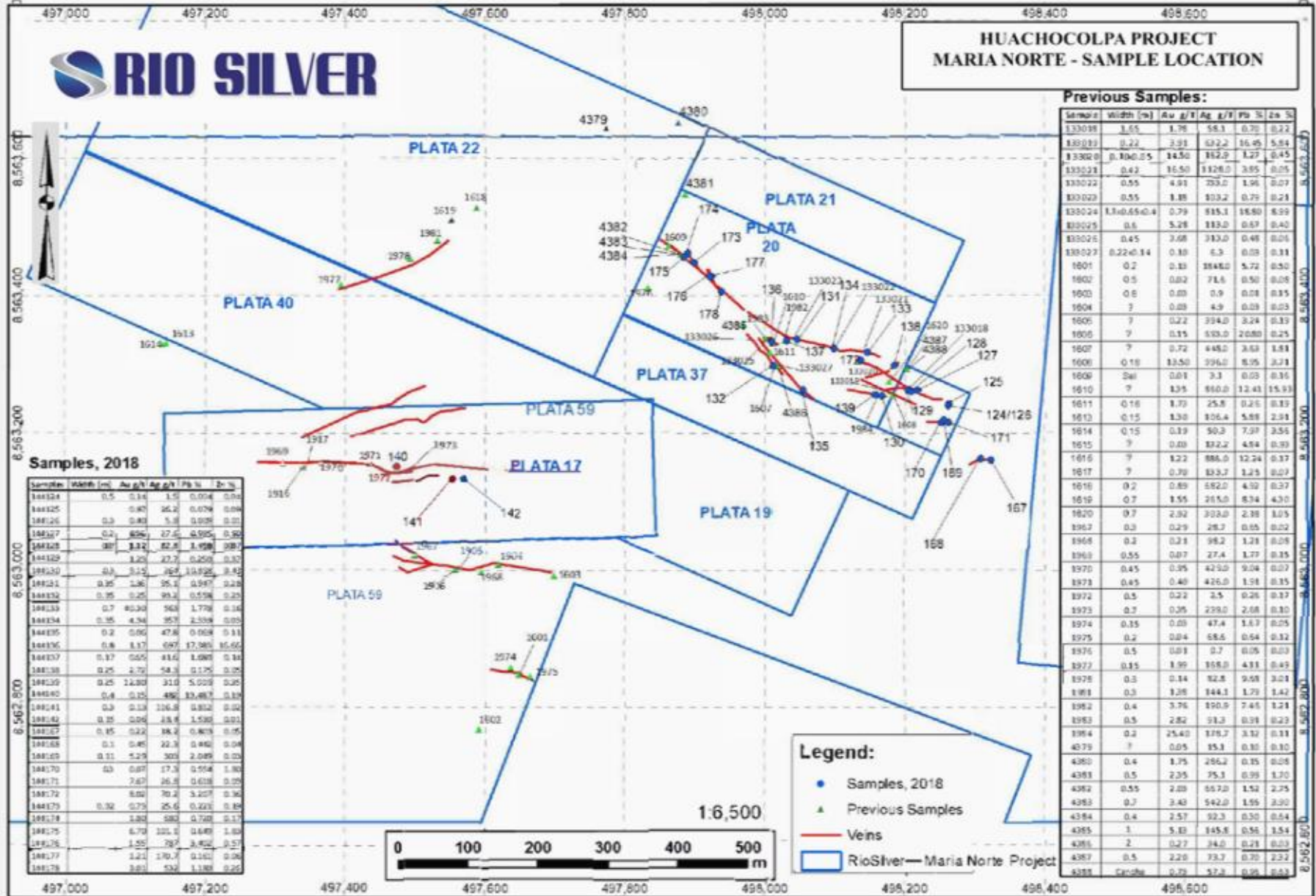
**RIO SILVER** Maria Norte Project  
Location of Mineralized Structures  
in the NW Part of the Huachocolpa  
Mining District South - Central Peru

# LOOKING EAST – MARIA NORTE





**HUACHOCOLPA PROJECT  
MARIA NORTE - SAMPLE LOCATION**



**Samples, 2018**

Sample	Width (m)	Au g/t	Ag g/t	Pb %	Zn %
188124	0.5	0.14	1.5	0.004	0.04
188125	0.80	26.2	0.079	0.094	
188126	0.3	0.83	5.8	0.035	0.21
188127	0.4	806	27.4	0.095	0.90
188128	0.1	3.32	52.8	1.998	0.81
188129	1.20	3.20	27.7	0.250	0.32
188130	0.3	3.15	36.2	0.926	0.43
188131	0.35	1.36	35.2	0.947	0.23
188132	0.35	0.25	93.2	0.578	0.23
188133	0.7	40.39	96.8	1.778	0.34
188134	0.35	4.34	357	2.308	0.05
188135	0.2	0.66	47.8	0.168	0.31
188136	0.8	1.17	697	17.985	16.60
188137	0.17	0.60	41.6	1.680	0.34
188138	0.25	2.70	54.3	0.125	0.25
188139	0.25	14.80	31.0	5.020	0.26
188140	0.8	0.15	496	13.487	0.10
188141	0.3	0.13	116.8	0.832	0.02
188142	0.35	0.06	13.8	1.530	0.01
188143	0.35	0.22	18.2	0.403	0.15
188144	0.1	0.40	22.3	0.440	0.04
188145	0.11	5.29	303	2.089	0.23
188170	0.3	0.07	17.3	0.594	1.80
188171	2.67	26.8	0.028	0.225	
188172	0.02	70.2	3.207	0.34	
188173	0.30	0.73	25.4	0.623	0.48
188174	1.88	6.80	0.728	0.11	
188175	6.79	101.0	0.440	1.89	
188176	1.55	787	3.420	0.27	
188177	1.21	170.7	0.161	0.06	
188178	0.01	532	1.188	0.23	

**Previous Samples:**

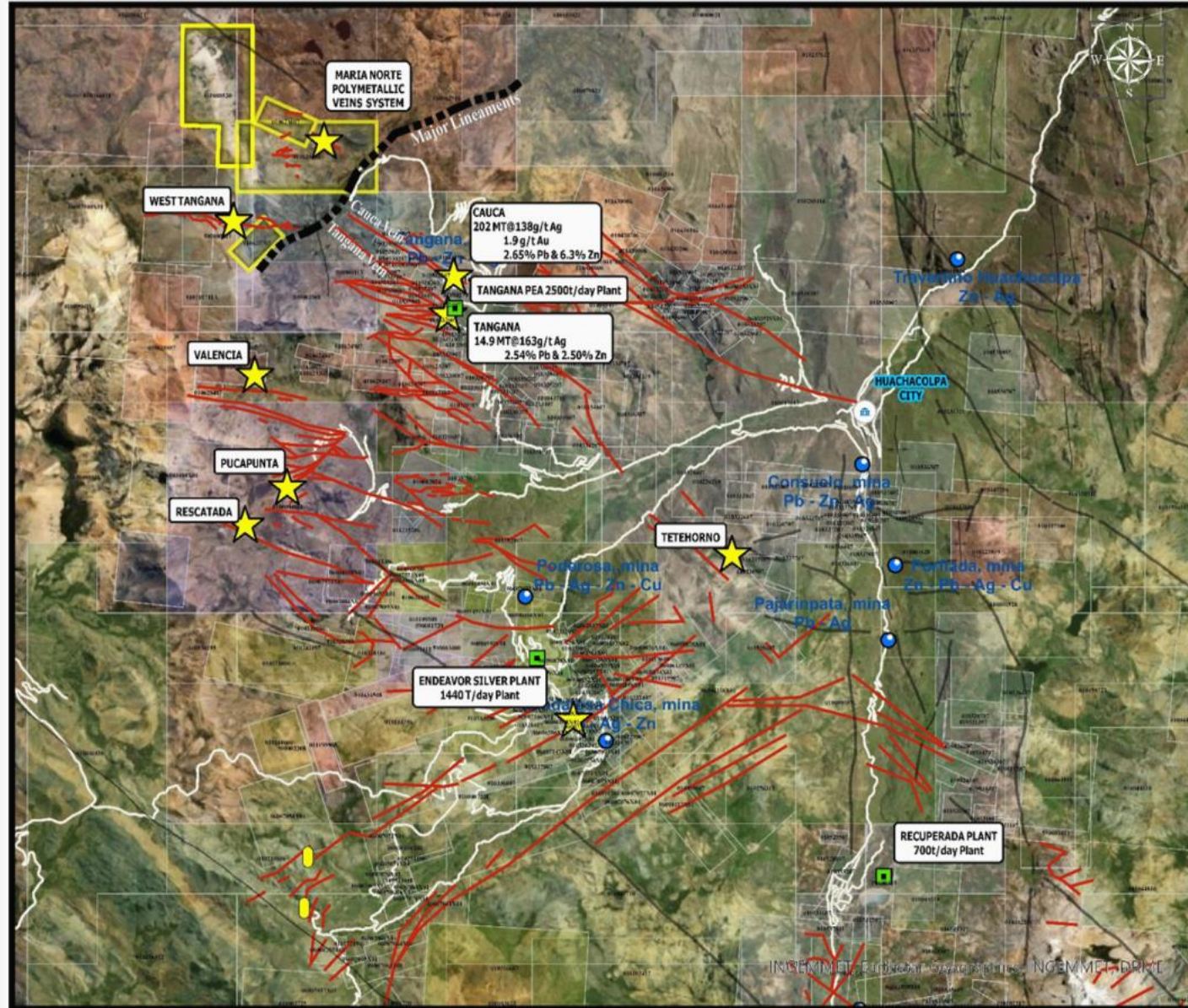
Sample	Width (m)	Au g/t	Ag g/t	Pb %	Zn %
133018	1.05	1.78	58.1	0.70	0.22
133019	0.22	3.31	122.2	16.45	5.94
133020	0.100-0.25	14.50	182.0	1.27	0.45
133021	0.42	16.50	1126.0	3.95	0.05
133022	0.55	4.91	703.0	1.96	0.07
133023	0.55	1.88	103.2	0.70	0.21
133024	1.3-0.65-0.4	0.79	815.1	16.80	6.99
133025	0.6	5.28	113.0	0.67	0.40
133026	0.45	3.68	333.0	0.48	0.06
133027	0.22-0.14	0.30	6.3	0.03	0.11
1601	0.2	0.31	1848.0	5.72	0.50
1602	0.5	0.02	71.6	0.50	0.08
1603	0.6	0.03	0.9	0.01	0.15
1604	?	0.03	4.9	0.03	0.03
1605	?	0.22	334.0	3.24	0.33
1606	?	0.15	533.0	2.080	0.25
1607	?	0.72	448.0	3.63	1.81
1608	0.18	13.50	396.0	8.05	3.71
1609	?	0.01	3.3	0.03	0.16
1610	?	1.35	860.0	12.41	15.93
1611	0.16	1.70	25.8	0.26	0.33
1612	0.15	1.30	106.4	5.88	2.91
1614	0.15	0.19	50.3	7.37	2.56
1615	?	0.03	122.2	4.84	0.30
1616	?	1.22	886.0	12.24	0.37
1617	?	0.70	133.7	1.25	0.07
1618	0.2	0.69	582.0	4.10	0.37
1619	0.7	1.55	215.0	8.34	4.30
1620	0.7	2.92	303.0	2.38	1.05
1967	0.3	0.29	26.7	0.05	0.02
1968	0.2	0.21	98.2	1.21	0.08
1969	0.55	0.07	27.4	1.77	0.15
1970	0.45	0.35	425.0	9.04	0.07
1971	0.45	0.40	426.0	1.91	0.15
1972	0.5	0.23	3.5	0.26	0.17
1973	0.7	0.26	239.0	2.68	0.10
1974	0.35	0.03	47.4	1.67	0.25
1975	0.2	0.04	58.6	0.54	0.32
1976	0.5	0.03	0.7	0.05	0.03
1977	0.15	1.99	158.0	4.81	0.43
1978	0.3	0.14	82.8	9.08	3.21
1981	0.3	1.18	144.1	1.70	1.42
1982	0.4	3.76	190.9	7.45	1.21
1983	0.5	2.82	91.3	0.98	0.23
1984	0.2	25.40	178.7	3.12	0.11
4379	?	0.05	15.1	0.30	0.10
4380	0.4	1.75	286.2	0.35	0.08
4381	0.5	2.25	75.1	0.95	1.70
4382	0.55	2.09	667.0	1.52	2.25
4383	0.7	3.40	542.0	1.95	3.00
4384	0.4	2.57	92.3	0.30	0.54
4385	1	5.81	145.8	0.56	1.51
4386	2	0.27	34.0	0.28	0.03
4387	0.5	2.20	73.7	0.70	2.32
4388	Gravel	0.70	57.9	0.98	0.63

**Legend:**

- Samples, 2018
- ▲ Previous Samples
- Veins
- ▭ RioSilver - Maria Norte Project



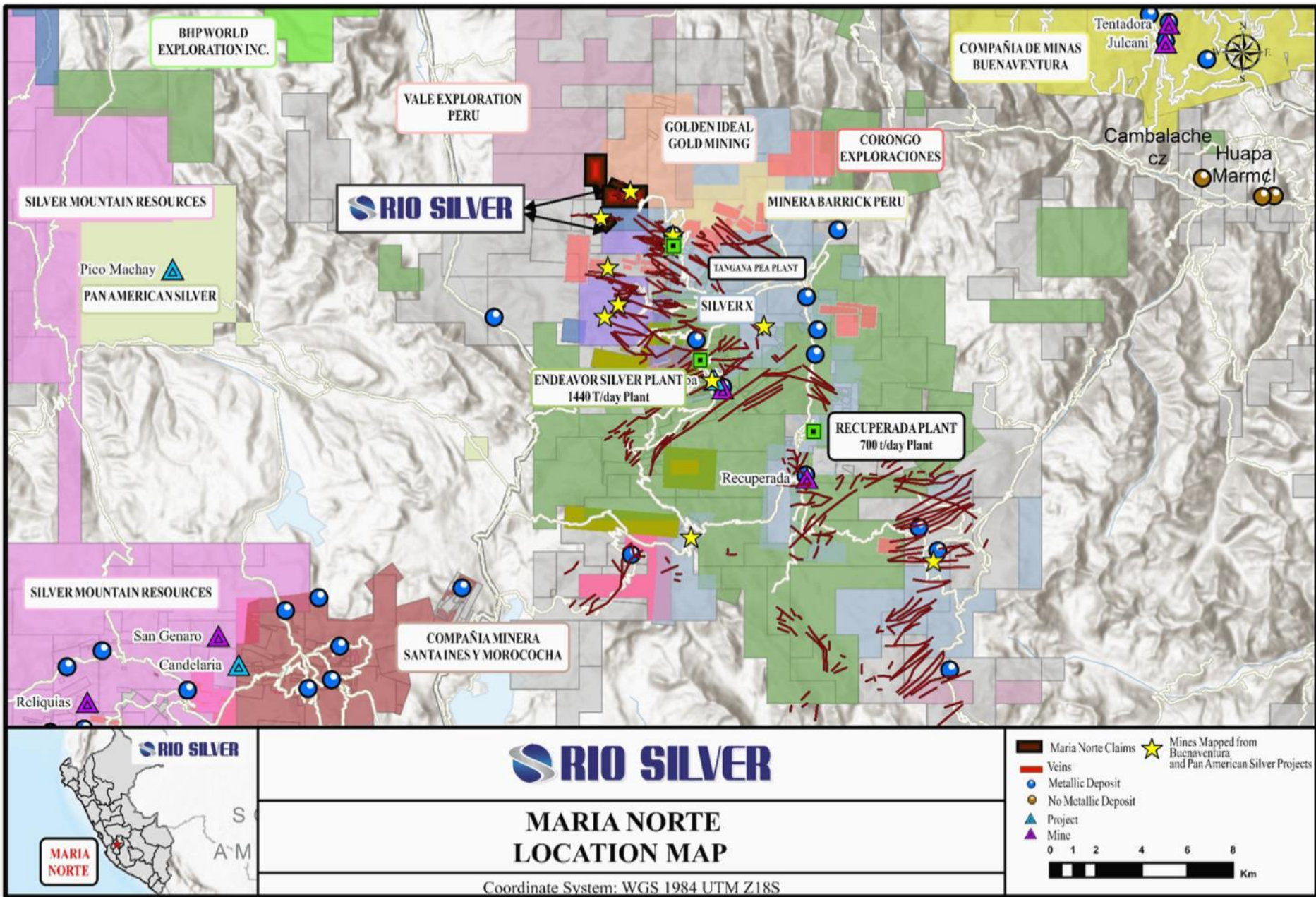
# MARIA NORTE VEINS SYSTEM



- Maria Norte Claims
- Others Claims
- Veins
- Metallic Deposit
- ▲ Project
- ▲ Mine
- ★ Mines Mapped from Buenaventura
- Au Small Mine
- Mineral Processing Plant



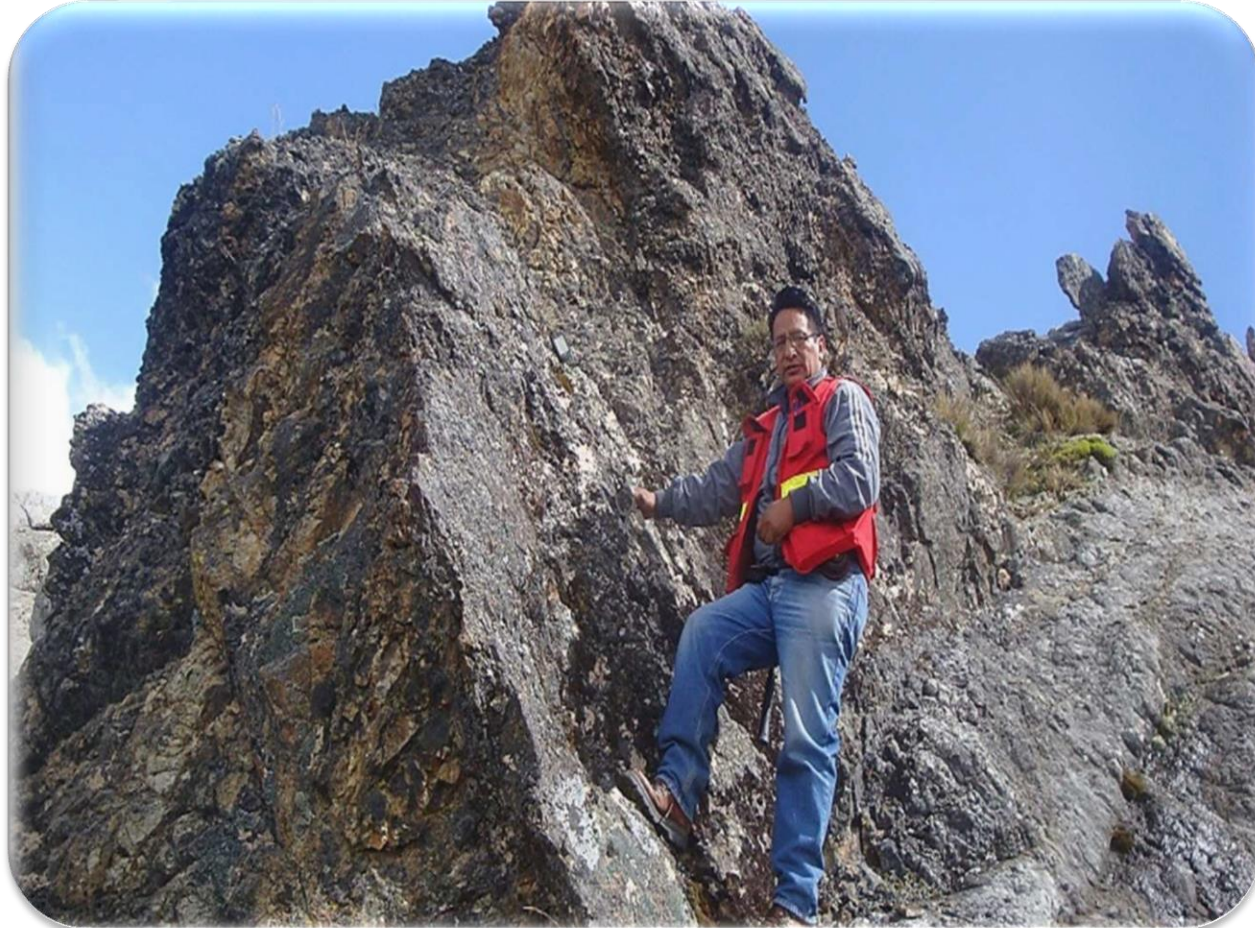
Coordinate System: WGS 1984 UTM Z18S



Gold – Silver • Advanced Exploration • Development

# Maria Norte Project

PAMELA I VEIN: Up to 4 meters in width



## CASTOR VEINS:

Au rich sample #133021 – 16.5 g/t Au, 1128 g/t Ag, 3.85% Pb



Au g/t	Ag g/t	Cu%	Pb%	Zn%
0.19	543.50	0.65	12.02	0.22



# RIO SILVER

c/o WeWork  
555 Burrard Street  
Vancouver, BC V7X1M8  
Tel: 604 762 4448

TSX.V : RYO

OTC : RYOOF

[www.riosilverinc.com](http://www.riosilverinc.com)

**Chris Verrico**

**Email: [chris.verrico@riosilverinc.com](mailto:chris.verrico@riosilverinc.com)**

